

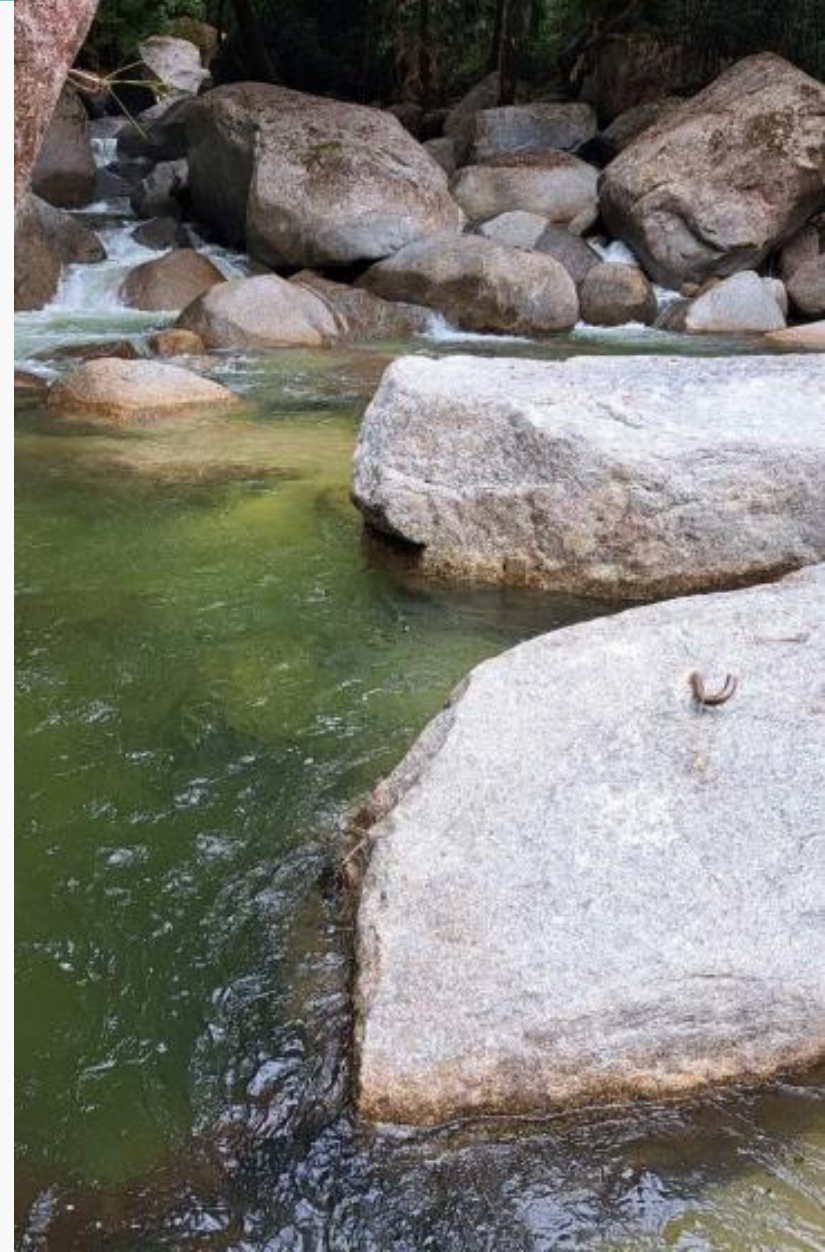


# TPDD Summer Preparedness Briefing - Water Update

1

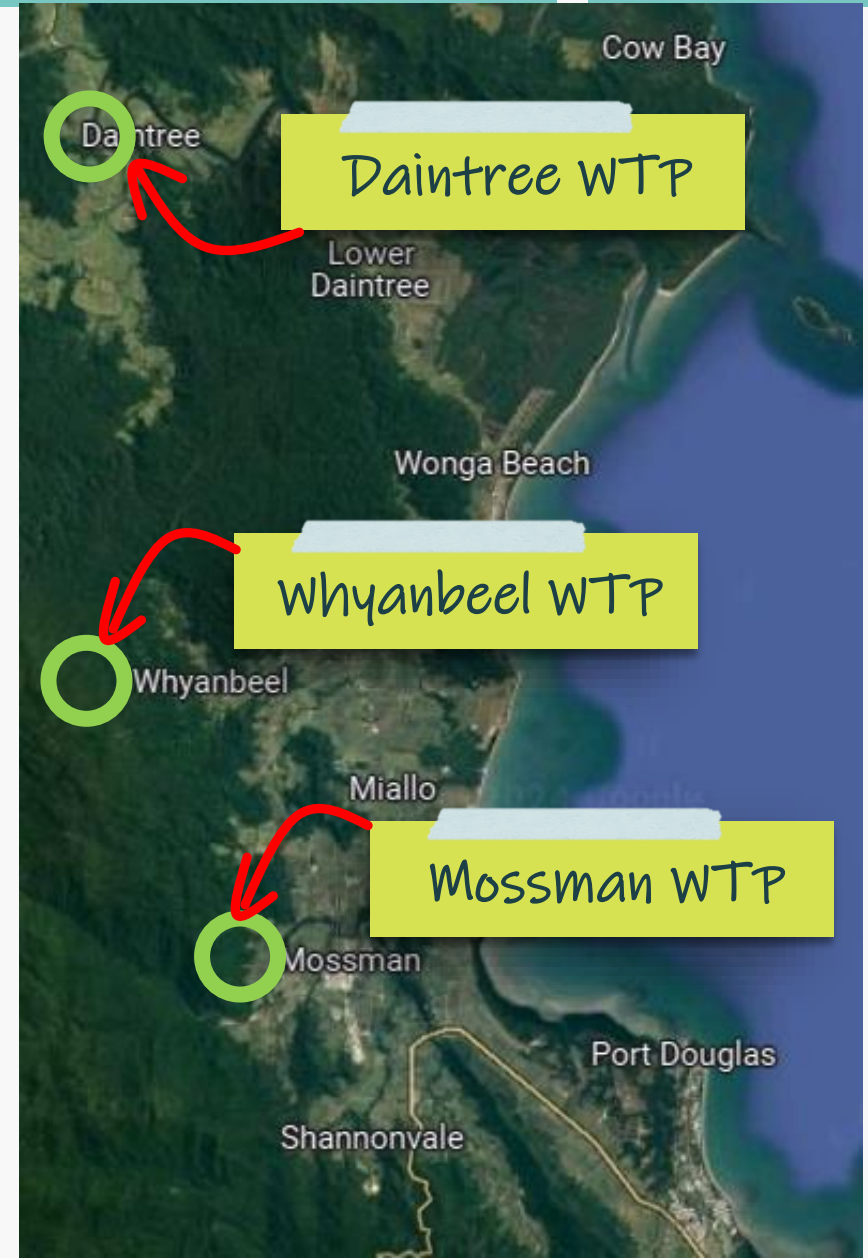
Today's presentation:

*To provide an overview of water security planning for the 2024/25 wet season*



# Our Water Supply Network

- **Daintree:**
  - Daintree Township
- **Mossman/Port Douglas:**
  - Mossman, North Mossman, Port Douglas, Craiglie, Newell Beach, Cooya Beach, Cassowary, Mowbray
- **Whyanbeel:**
  - Whyanbeel, Miallo, Bamboo, Rocky Point, Port Douglas Views, Wonga Beach
- **Our WTPs have successfully operated for more than 20 years without any loss of supply to the community**





# The Impacts of TC Jasper

Whyanbeel WTP  
Intake Pre-Jasper



Whyanbeel WTP  
Intake Post-Jasper





# The Impacts of TC Jasper

Whyanbeel WTP  
Intake Pre-Jasper



Whyanbeel WTP  
Intake Post-Jasper



Water production continues



Water production stops





Newly created  
landslides

Newly created  
landslides



Newly created  
landslides



Newly created  
landslides

High raw water turbidity has affected the water treatment processes by blocking filtration membranes, resulting in more frequent backwashing (cleaning)



# The Impacts of TC Jasper

Increased breaks within the water network, contributing to high water losses. Caused by debris moved by flood waters, pressure fluctuations and ground movement







Full 

Issue 1: When water production stops, our stored water levels begin to decline

Empty 

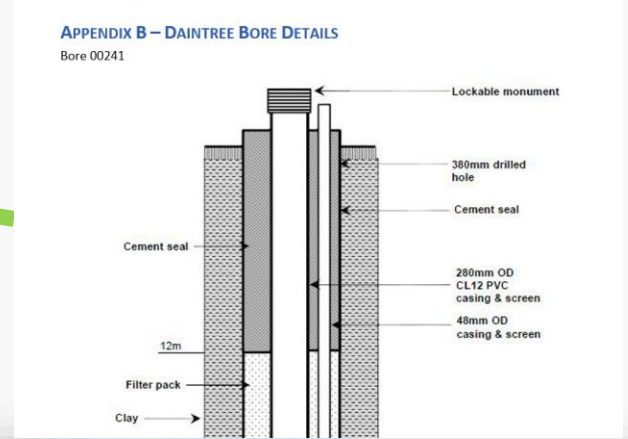
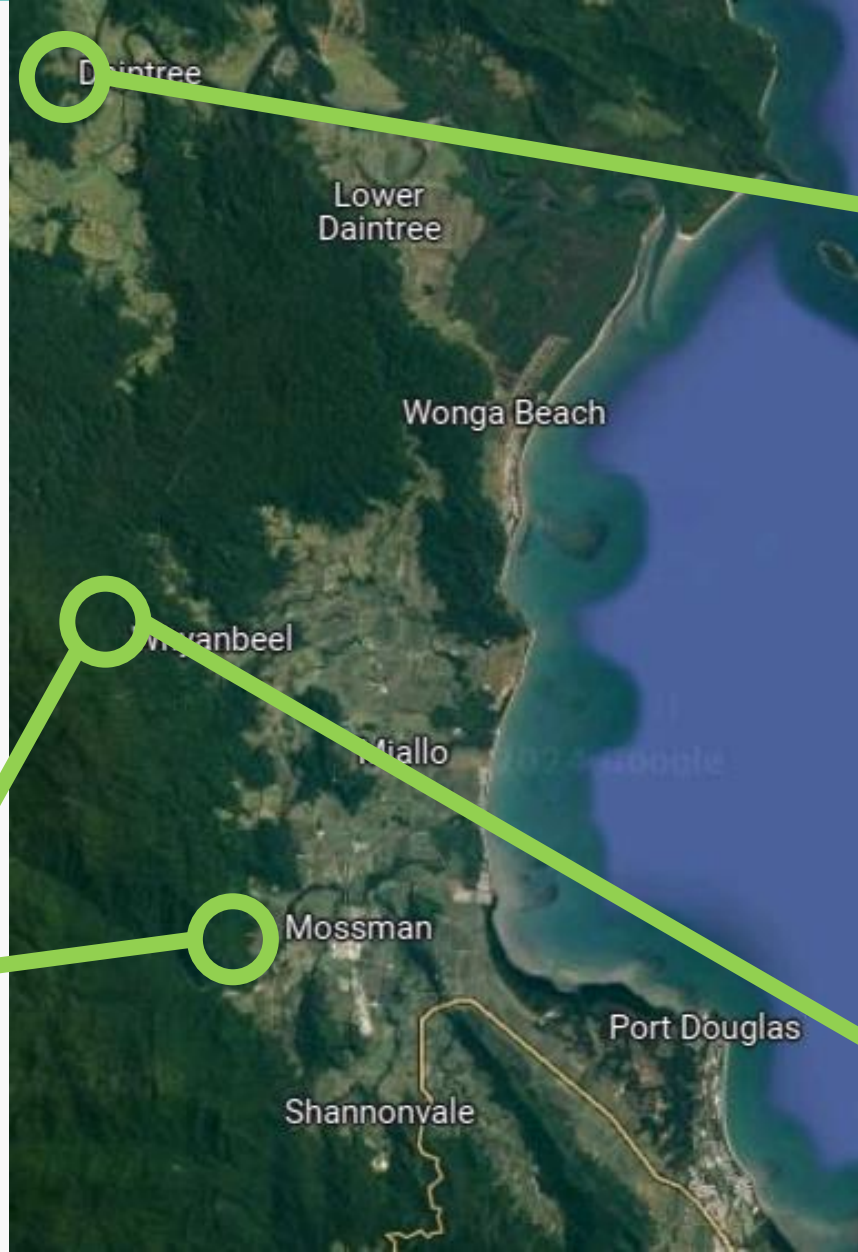
Issue 2: Breakages caused rapid loss of stored water from our reservoirs



# What have we done since TC Jasper?



Membrane replacement works at the Mossman and Whyanbeel WTPs



Bore supply to Daintree WTP



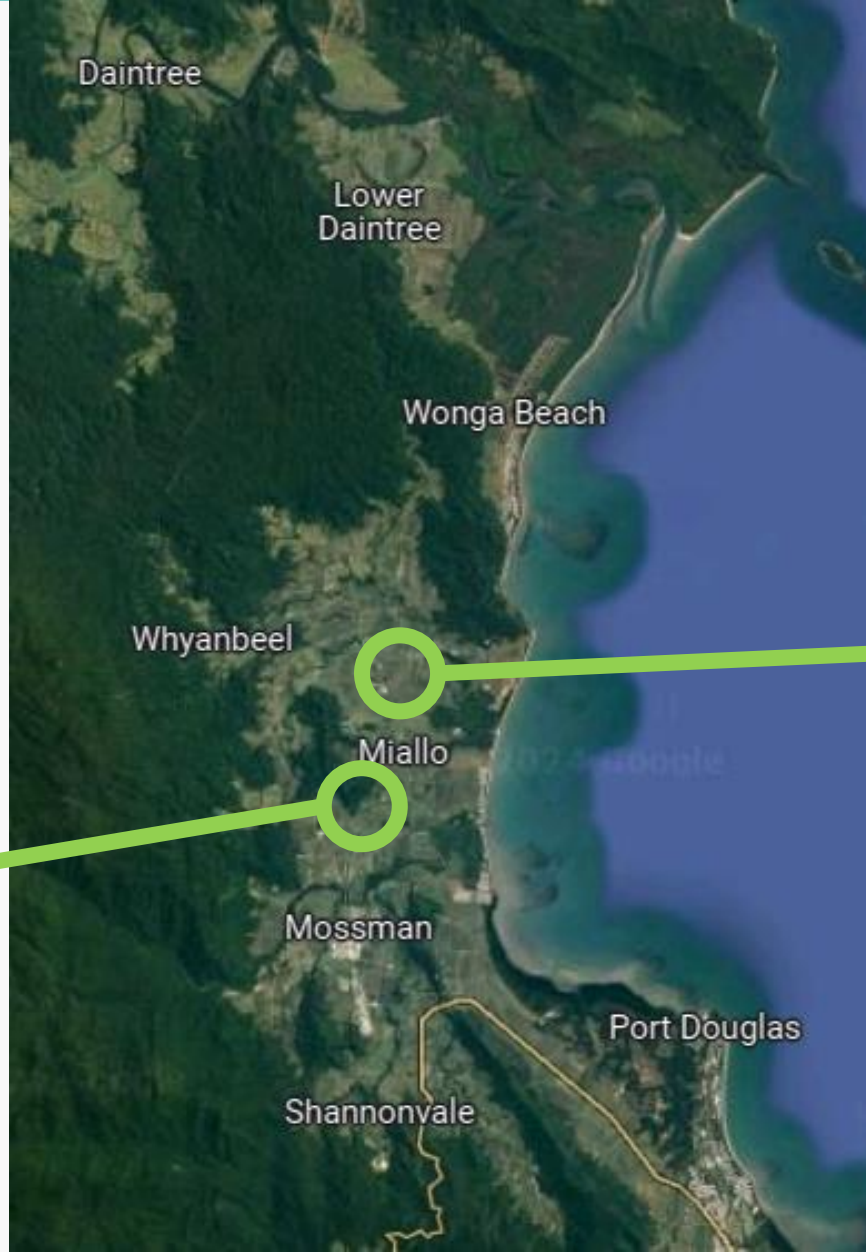
Whyanbeel WTP Hire Package Plant



# What have we done since TC Jasper?



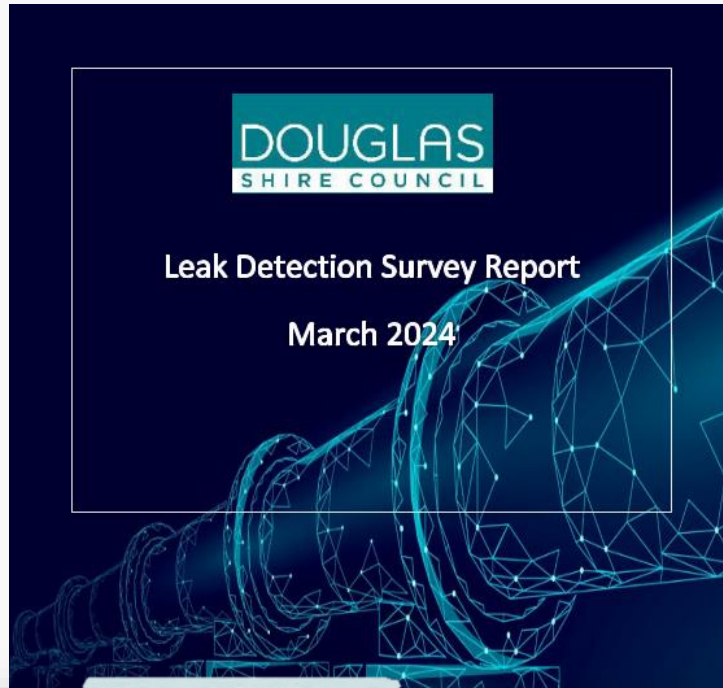
Mossman to Whyanbeel Interconnector



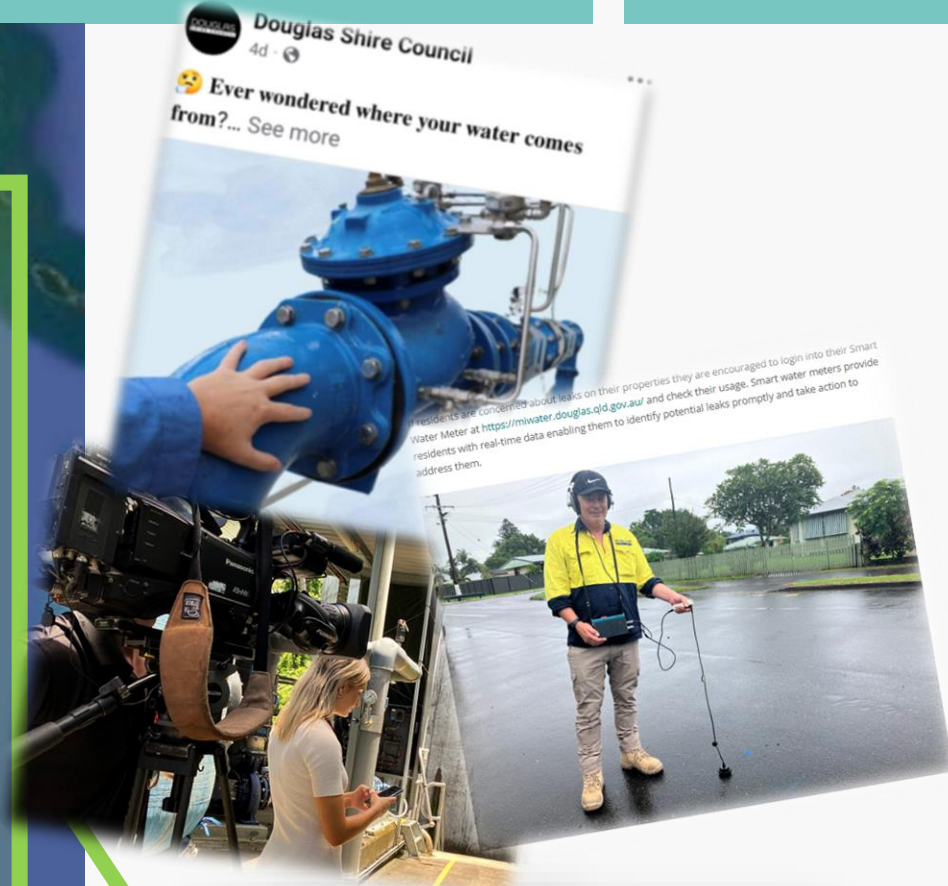
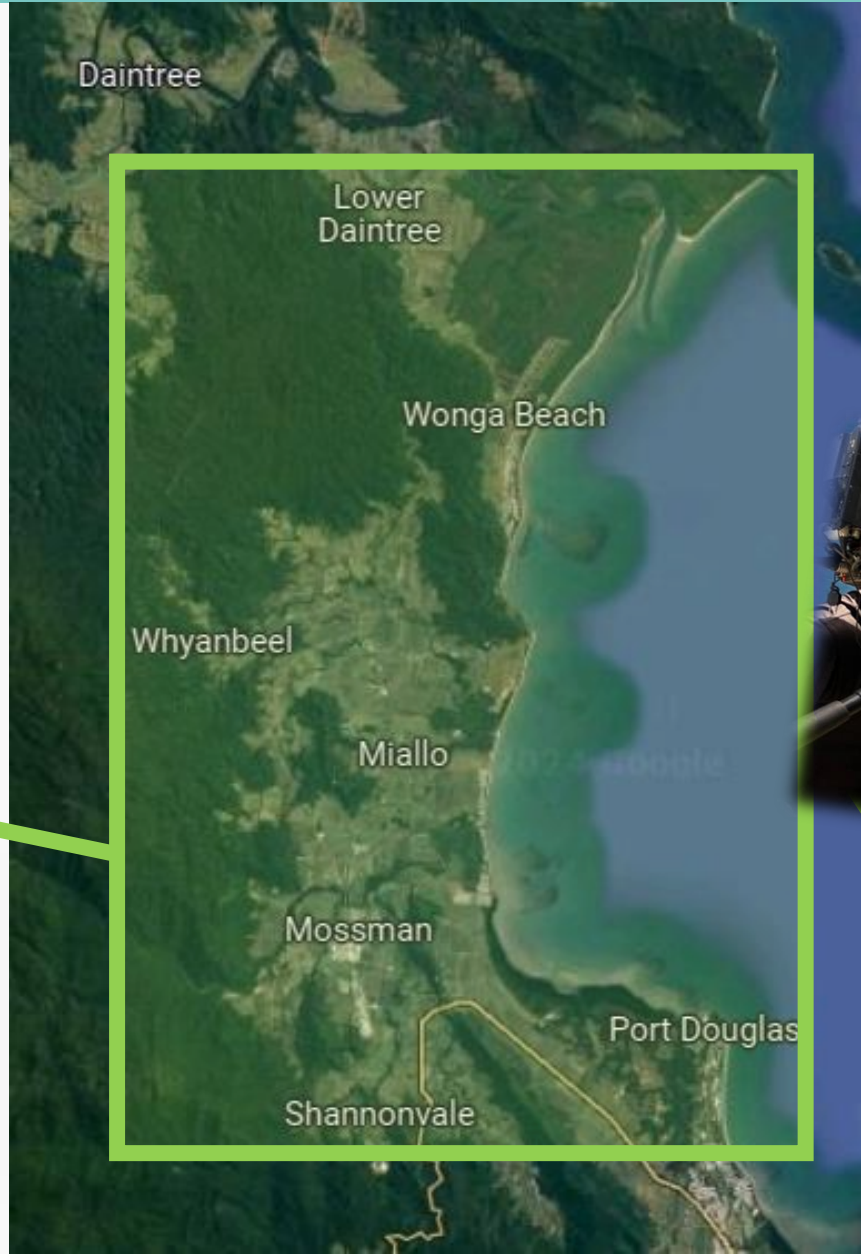
Rocky Point Reservoir



# What have we done since TC Jasper?

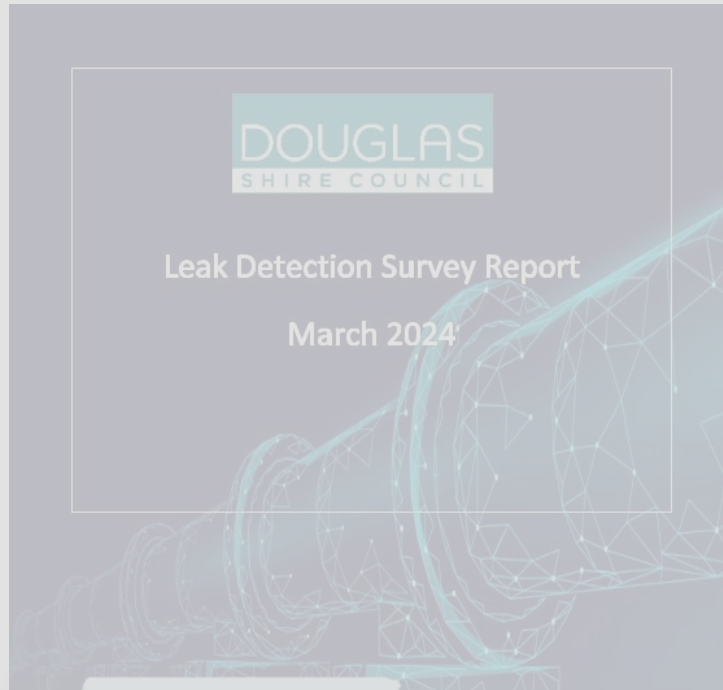


Water Mains Leak Detection and Priority Rectification Works (including River Under-boring)

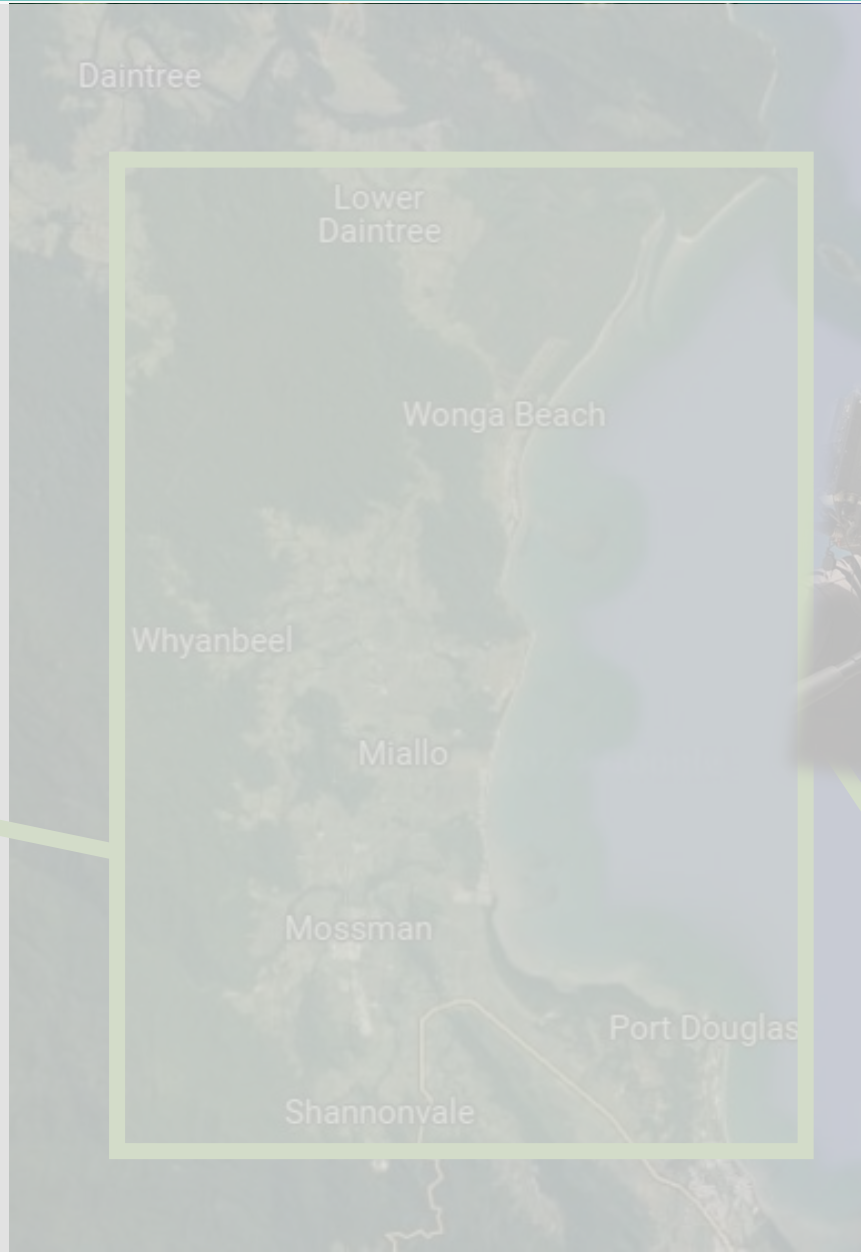


Community Engagement and Education



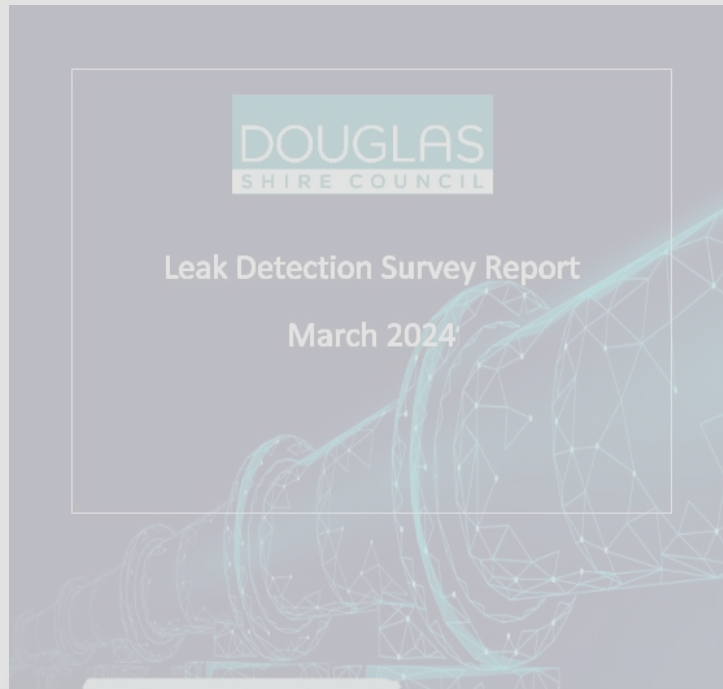


Water Mains Leak Detection and Priority Rectification Works (including River Under-boring)

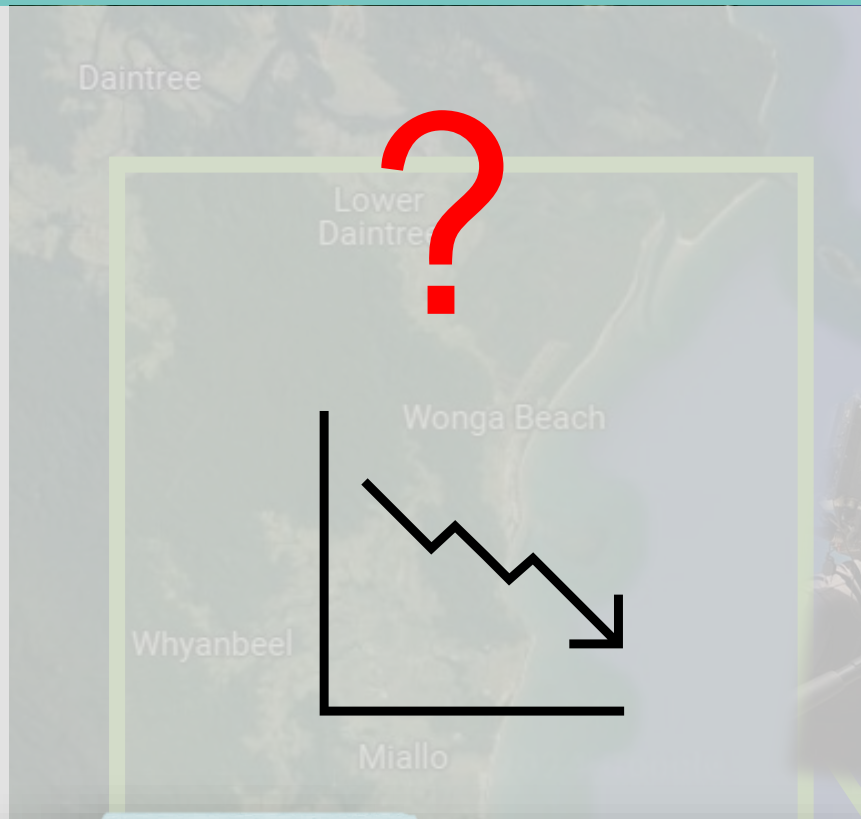


Community Engagement and Education

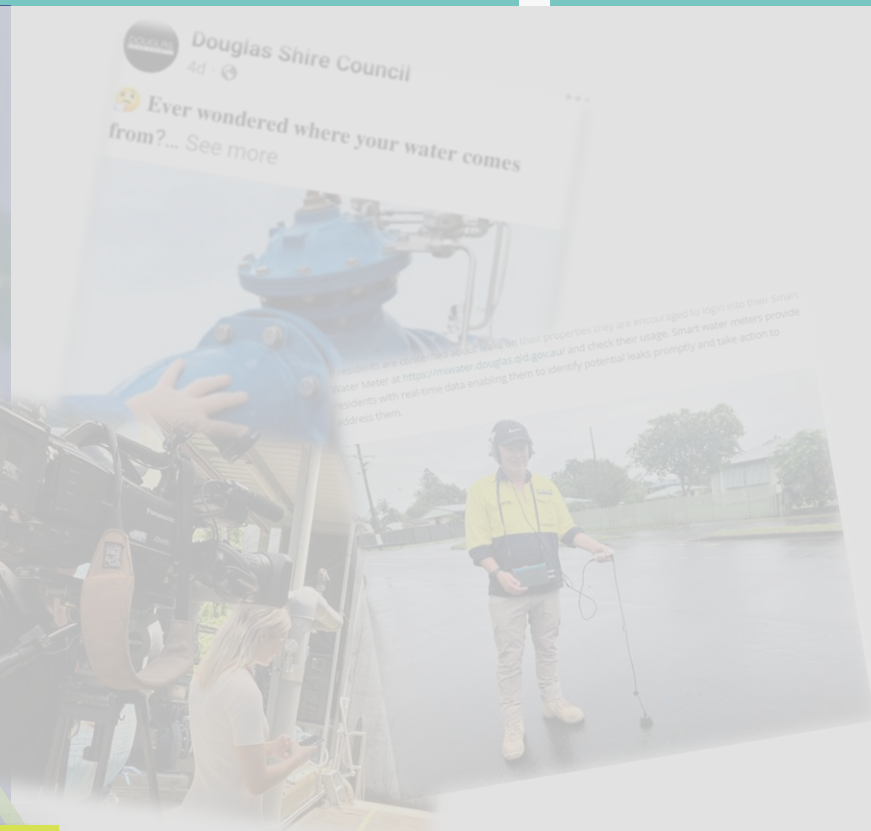




Water Mains Leak Detection and Priority Rectification Works (including River Under-boring)



What are our options if water storage levels continue to fall during the wet season?



Community Engagement and Education





## HOW CAN YOU PREPARE YOUR HOME?

### GET READY DOUGLAS

In the lead-up to the wet season Council is encouraging residents to think about their families needs and how they can prepare.

### Get Prepared



Ensure your family has a sufficient back up drinking water supply.

It is recommended you have a supply of 10 litres per person of water in sealed containers.

.....  
Ensure you have stored sufficient drinking water for your pets

.....  
Have buckets handy to collect rain water. This can be utilised to flush toilets, water for pets, wash clothes, wash dishes and other cleaning purposes.

### Water Conservation Tips

A significant portion of our water supply is used for irrigation, pool filling, and other outdoor activities.

By focusing on reducing non-essential water usage in these areas, we can make a substantial impact on preserving our precious water resources, especially during times when our water supply systems need extra support.

Here are some tips on how you can conserve water around your home:



#### Make every drop count

Collect water as you are waiting for it to heat or cool, and then use it on your garden or put it in a bottle in your fridge.



#### Water only what grows

Use a broom to sweep outdoor areas rather than hosing them down. Use a bucket if you need to wash the area.



- Council has adopted an additional “*Emergency Water Restrictions*”
- Implemented only when there is an imminent risk of the community running out of potable water (i.e. triggered only when we are at imminent risk of running out of water if consumption isn’t reduced)
- The intent is that these are “flash” restrictions, implemented rapidly to allow the WTPs to recover supply security and released as soon as possible when that has occurred




## Emergency Water Restriction

Internal domestic use – drinking, cooking, toilet flushing, personal hygiene	Allowed at any time, with a target of no more than 100L per person per day. Eg. limit showers to 2 minutes per person. Consider only flushing solid waste in toilets.
Washing machines	Limit if possible.
Fire fighting or other emergency purposes	Any time as reasonably required.
Hospitals and medical services	Any time as reasonably required.
Schools/ Preschools/ Aged Care	Any time as reasonably required.
Food businesses	Minimise use if possible while meeting food safety requirements.
Supplying water for livestock and other animals	Any time as reasonably required.
Outdoor water use by Council	Must not be used at any time.
Watering of plants, gardens and lawns	Must not be used at any time.
Use of manual sprinklers, automated sprinklers, micro-spray or drip watering irrigation systems	Must not be used at any time.
Private swimming pools, spas and portable paddling pools - filling or topping up	Must not be used at any time.
Water features (ie. ponds, water fountains and ornaments)	Must not be used at any time.



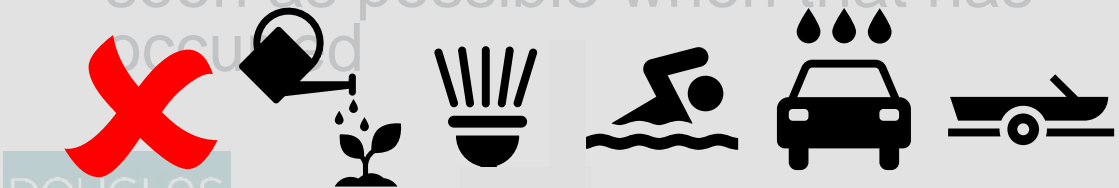
- 
 Council has adopted an additional “Emergency Water Restrictions”
- 
 Implemented only when there is an imminent risk of the community running out of potable water (i.e. triggered only when there is an imminent risk of running out of water if consumption isn't reduced)

- 
 The intent is that these are “flash” restrictions implemented rapidly to allow the WTPs to recover supply security and released as soon as possible when that has occurred

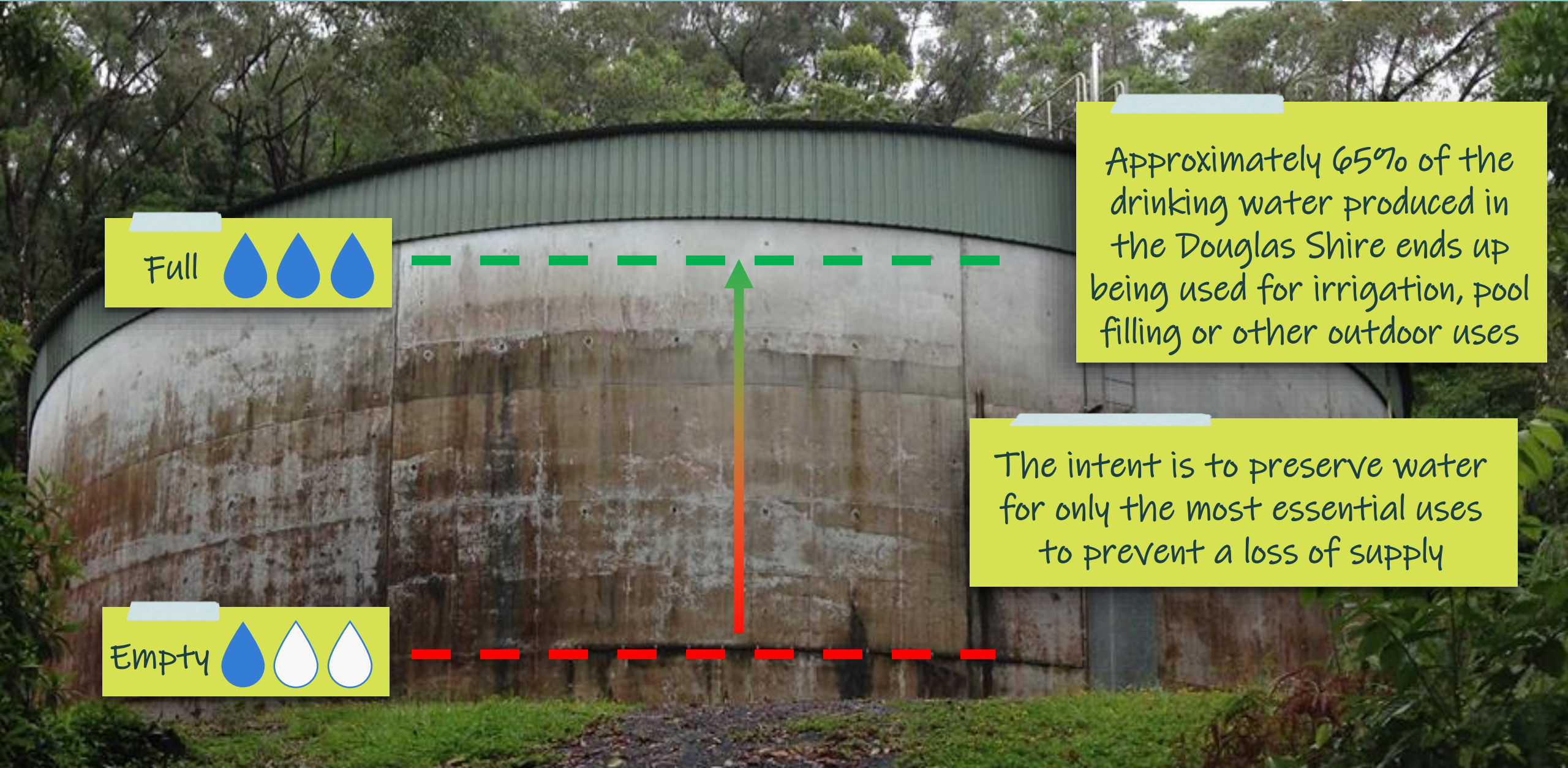


## Emergency Water Restriction

Internal domestic use – drinking, cooking, toilet flushing, personal hygiene	Allowed at any time, with a target of no more than 100L per person per day. Eg. limit showers to 2 minutes per person. Consider only flushing solid waste in toilets.
Washing machines	Limit if possible.
Fire fighting or other emergency purposes	Any time as reasonably required.
Hospitals and medical services	Any time as reasonably required.
Schools/ Preschools/ Aged Care	Any time as reasonably required.
Food businesses	Minimise use if possible while meeting food safety requirements.
Supplying water for livestock and other animals	Any time as reasonably required.
Outdoor water use by Council	Must not be used at any time.
Watering of plants, gardens and lawns	Must not be used at any time.
Use of manual sprinklers, automated sprinklers, micro-spray or drip watering irrigation systems	Must not be used at any time.
Private swimming pools, spas and portable paddling pools - filling or topping up	Must not be used at any time.
Water features (ie. ponds, water fountains and ornaments)	Must not be used at any time.







Full 

Approximately 65% of the drinking water produced in the Douglas Shire ends up being used for irrigation, pool filling or other outdoor uses

The intent is to preserve water for only the most essential uses to prevent a loss of supply

Empty 



- It is important to release Emergency Restrictions as soon as possible
- All reservoirs should be back near maximum capacity before this occurs, and the restrictions relaxed to a level that still indicates the need to conserve water



## Emergency Water Restriction

Internal domestic use - drinking, cooking, toilet flushing, personal hygiene	Allowed at any time, with a target of no more than 100L per person per day. Eg. limit showers to 2 minutes per person. Consider only flushing solid waste in toilets.
Washing machines	Limit if possible.
Fire fighting or other emergency purposes	Any time as reasonably required.
Hospitals and medical services	Any time as reasonably required.
Schools/ Preschools/ Aged Care	Any time as reasonably required.
Food businesses	Minimise use if possible while meeting food safety requirements.
Supplying water for livestock and other animals	Any time as reasonably required.
Outdoor water use by Council	Must not be used at any time.
Watering of plants, gardens and lawns	Must not be used at any time.
Use of manual sprinklers, automated sprinklers, micro-spray or drip watering irrigation systems	Must not be used at any time.
Private swimming pools, spas and portable paddling pools - filling or topping up	Must not be used at any time.
Water features (ie. ponds, water fountains and ornaments)	Must not be used at any time.





The Mossman River Intake project will establish a more reliable and resilient water source in response to TC Jasper, and forms part of Douglas Shire's Water Supply Security Strategy & Implementation Plan

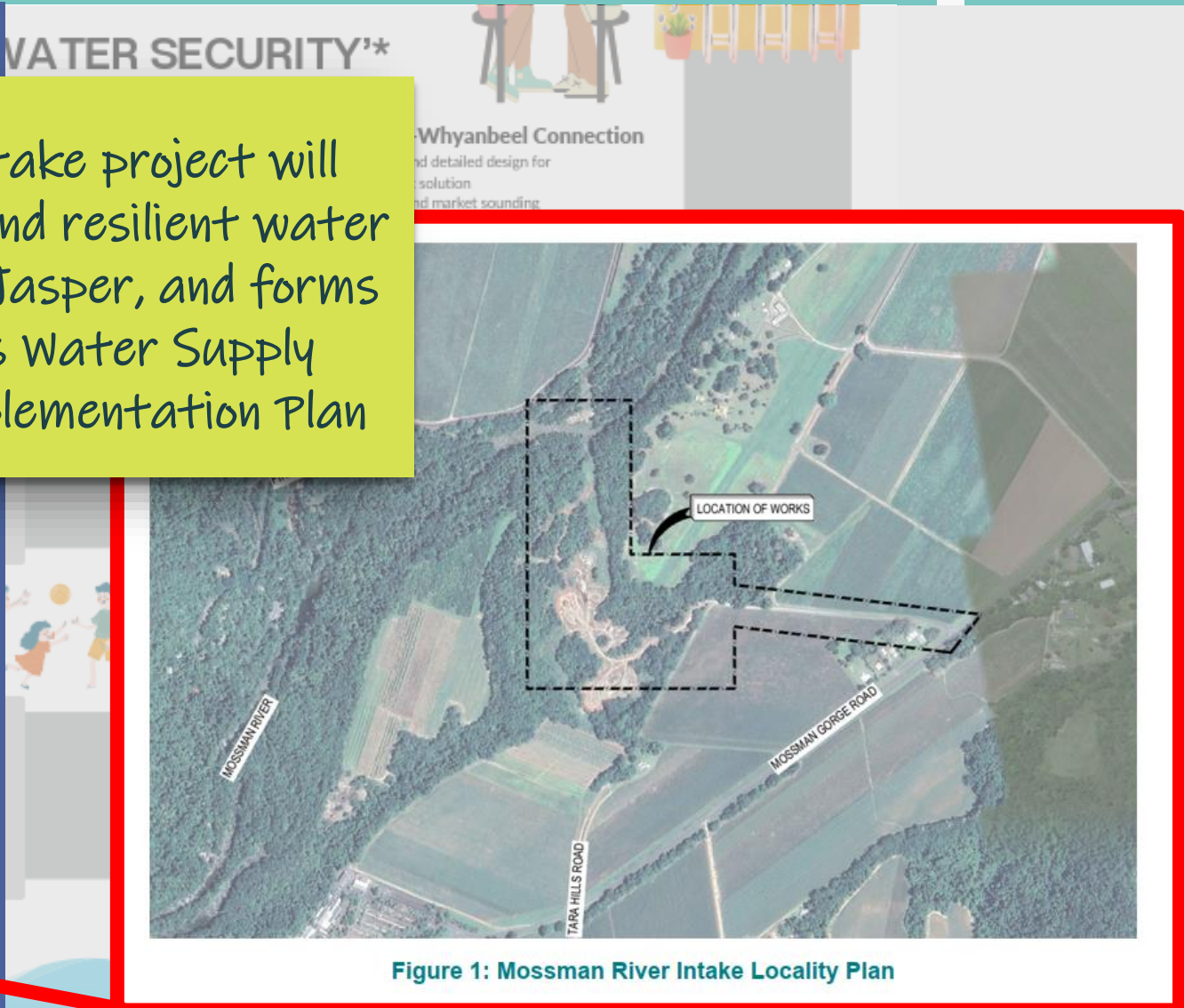
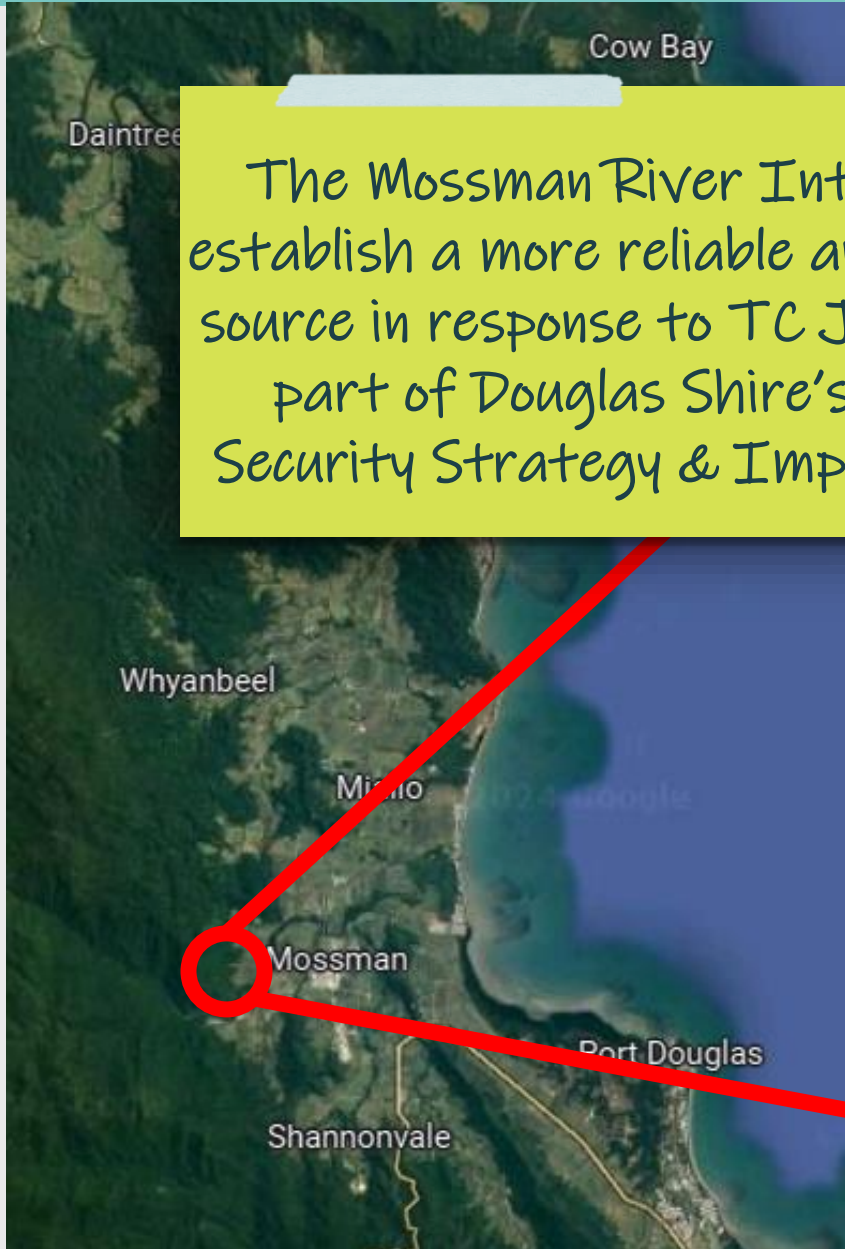


Figure 1: Mossman River Intake Locality Plan

Questions?

